



# Welcome to Better Meetings.



Meet



Collaborate



Share



Manage

**PH: 09 414 0094**

**FREE PH: 0800 368 474**

**EMAIL: [sales@activevision.co.nz](mailto:sales@activevision.co.nz)**

**WEB: [activevision.co.nz](http://activevision.co.nz)**



10+

Years in Business



30+

Countries



Global

Customers

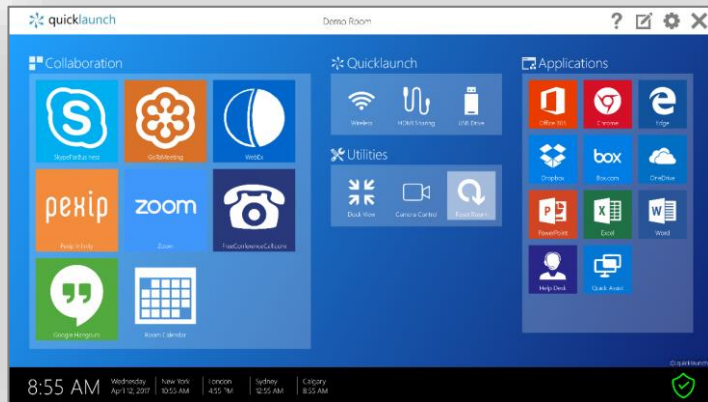


# Versions to Match your Requirements



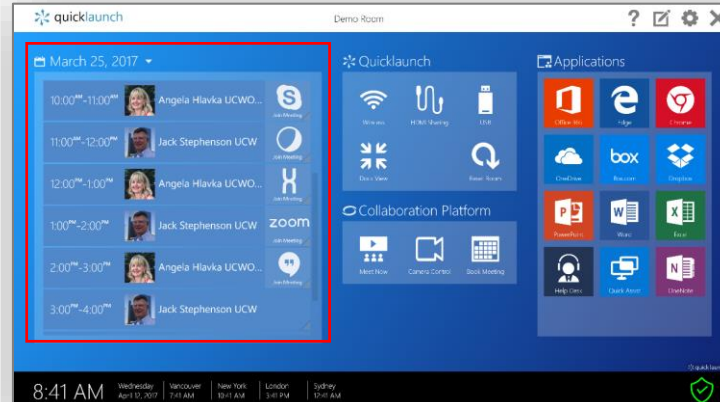
## Standard Edition

Huddle Spaces and Small Meeting Rooms  
Multiple Collaboration Platforms



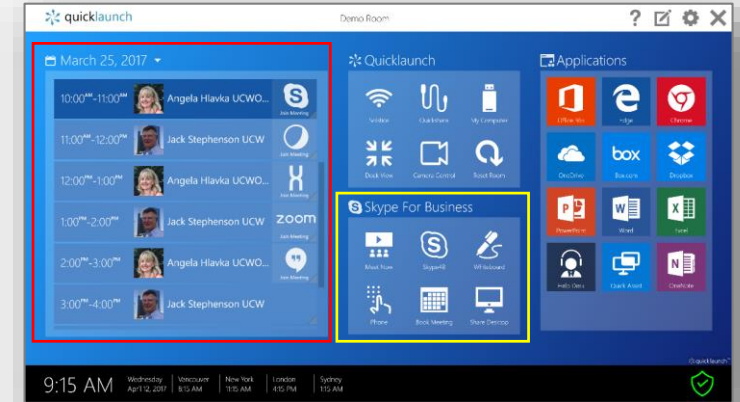
## Professional Edition

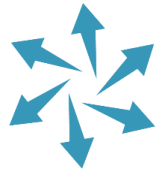
All Workspaces  
Multiple Collaboration Platforms  
Meeting Rooms with Calendar and Join



## Ultimate Edition

All Workspaces  
Multiple Collaboration Platforms  
Meeting Rooms with Calendar and Join  
Skype for Business API Integration  
Multiple HDMI Input Sources  
Advanced Security Requirements





# Features to Match your Requirements

## quicklaunch SE

Start Collaboration Applications  
4 Customizable Action Groups  
Launch Desktop & Cloud Applications  
Launch URL's, Email and Files  
Access One Drive, Box, Dropbox and more  
Dual Display

Multiple Themes  
Custom Branding and Colors  
Designer Mode  
Custom Logos  
Icon Library with Icon Trace

Logitech Camera Controls  
Intel Unite \*  
(Bundled with Logitech KIT)

**New** Dynamic, Flat and Pinnable  
**New** Tabbed or Classic Flat Interface  
**New** Window Controls

Quickshare Wired Screen Sharing\*  
(requires capture device purchased separately)

Wireless Screen Sharing Integration  
Intel Unite (Bundled with Logitech KIT) \*  
Solstice (purchased separately or with partner bundle)  
Solstice Pod (purchased separately, requires capture device)  
Barco (purchased separately, requires capture device)  
Crestron Air Media  
(purchased separately, requires capture device)

Customizable System Monitoring  
Configuration Wizard  
Imports/Export Configurations

Room Reset  
Lock Down Mode  
Dual Display  
Windows 7,8,10

## quicklaunch PE

### Everything in Standard Edition Plus...

One Click to Join Meetings  
**Skype for Business, Skype Broadcast, Skype  
Go To Meeting, WebEx, Google Hangouts  
Zoom, Blue Jeans, Adobe Connect, Pexip....**

Calendar View  
Show Meeting Details  
Picture Support  
Reset on Meeting End

**New** – Gmail Integration  
**New** – Exchange Only Calendar Integration

Display Rules  
3 Action Groups  
One Note Custom Integration

**New** – Meeting Timer

## quicklaunch UE

### Everything in Standard Edition and Professional Edition Plus...

Calendar View  
Book Now  
Group Email  
Add Participants

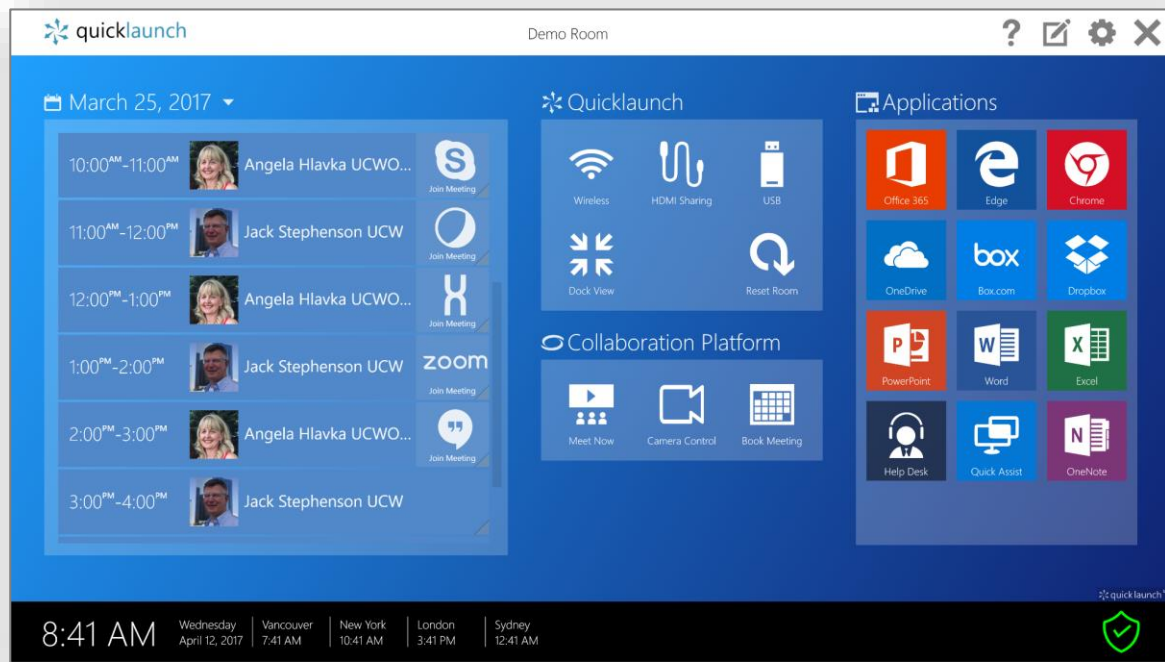
Skype for Business Integration  
Meet Now, Whiteboard, Dialpad

Room Reset  
Delete Documents Folder, Delete Desktop  
Items, Custom Pre/Post Reset Batch Files

Quickshare  
**New** - Multiple Inputs, Multiple Layouts

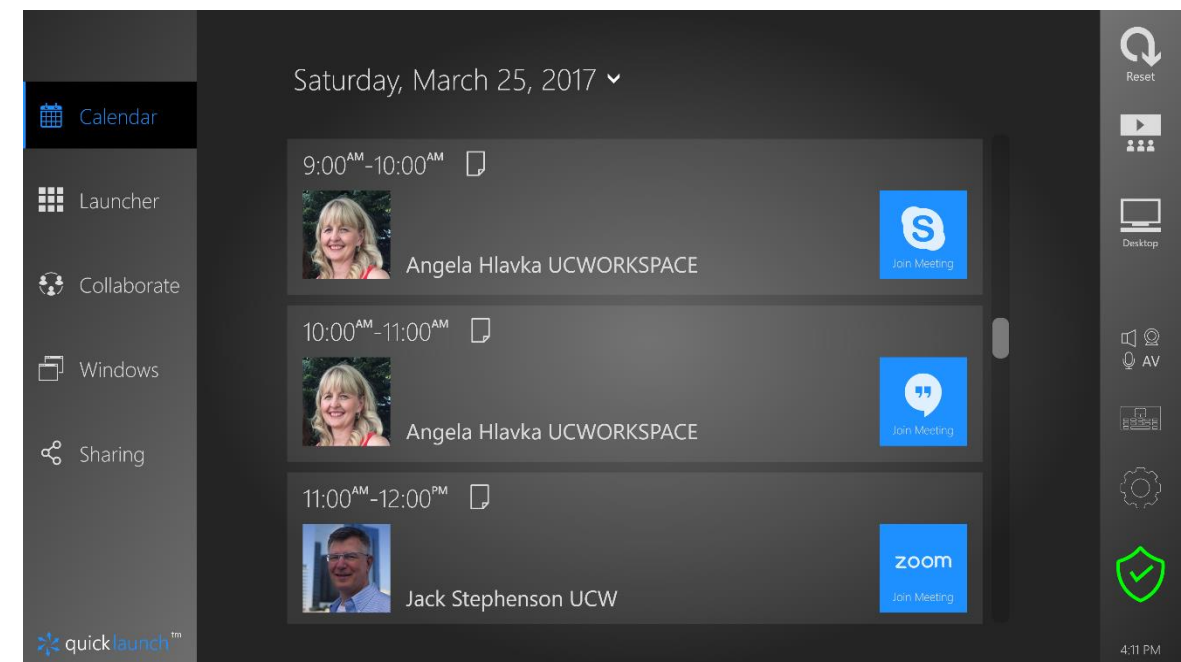
Broadcast Message  
Change User

## Flat Interface



Everything Available as a Single Touch or Click from Interface

## Tabbed Interface



Requires 16:9 / 16/10 Display Ratio

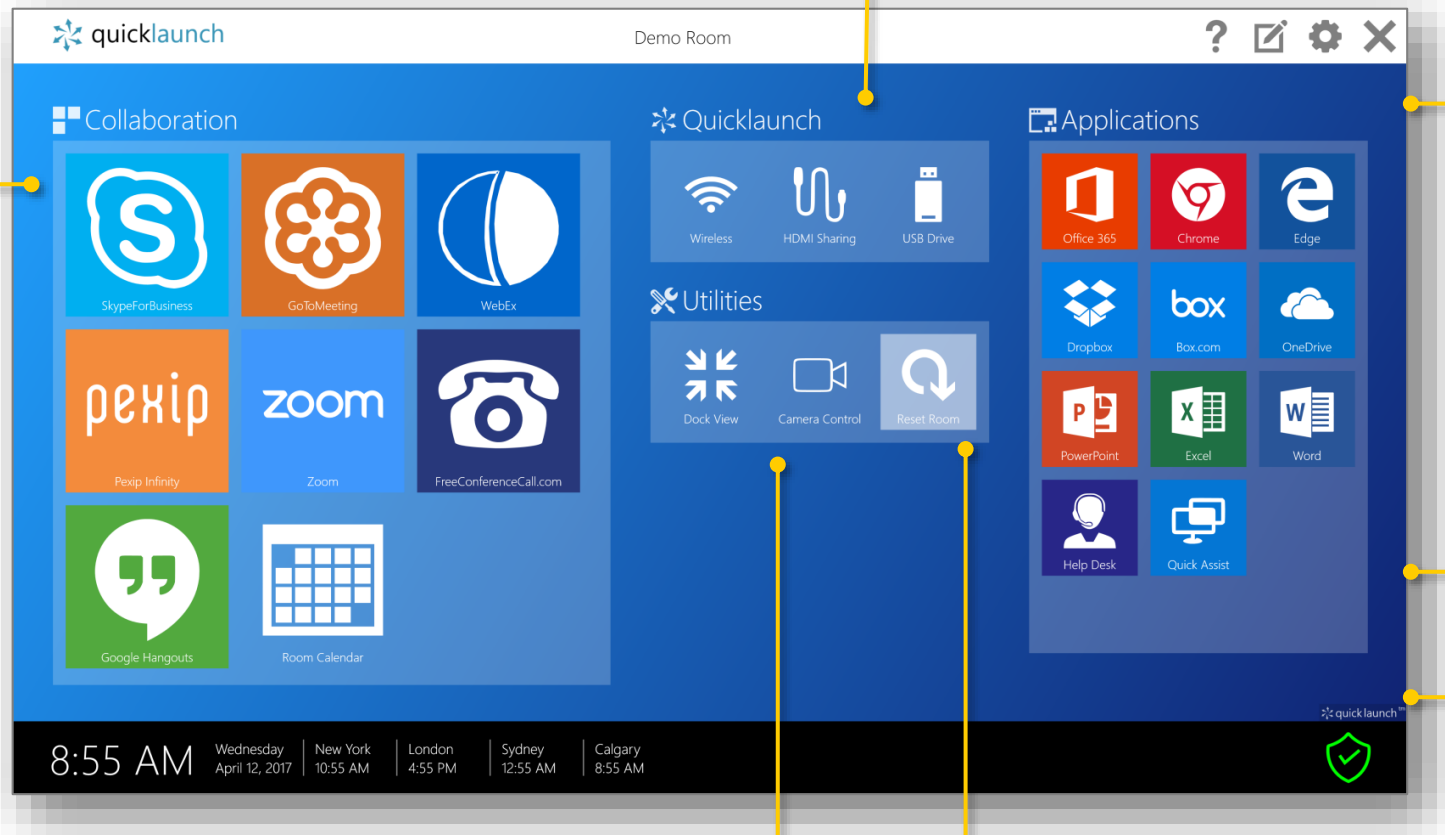
Fewer Choices on any Given Screen - Utilize Touch and Menus



## Meet

Start Collaboration  
Applications

Local Calendar  
Join or Book Meetings



## Collaborate

Whiteboard  
Start Applications  
Launch Websites  
Access Data  
and Content



## Manage

Customizable  
Helpdesk Tiles

System Status  
Notifications

Camera Control

Securely End Meeting  
(Automated and/or By Button)

\* Requires 3<sup>rd</sup> Party Sharing Application

\*\* Requires USB Capture Device



Wireless Share \*    Wired HDMI    Device Sharing\*\*    Easy File, RDP, USB Access and more



One Click Join  
Or Adhoc

Exchange or  
Google Calendar

quicklaunch

Demo Room

March 25, 2017

9:00 AM - 10:00 AM

Angela Hlavka UCWO...

Join Meeting

10:00 AM - 11:00 AM

Angela Hlavka UCWO...

Join Meeting

11:00 AM - 12:00 PM

Jack Stephenson UCW

Join Meeting

12:00 PM - 1:00 PM

1:00 PM - 2:00 PM

Angela Hlavka UCWO...

Join Meeting

2:00 PM - 3:00 PM

Jack S

Join Meeting

View Details

Quicklaunch

Wireless

HDMI Sharing

USB

Dock View

Camera Control

Reset Room

Collaborate

Meet Now

Whiteboard

Dial Pad

Skype4B

Hangout

Zoom

Launcher

Office 365

Edge

OneDrive

G Suite

G Suite Login

Chrome

Box.com

PowerPoint

Dropbox

Word

Excel

OneNote

Help Desk

Quick Assist

11:50 AM

Tuesday August 15, 2017

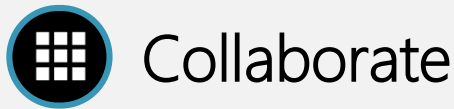
Vancouver 10:50 AM

New York 1:50 PM

London 6:50 PM

Sydney 3:50 AM

quick launch



Collaborate

Whiteboard  
Start Applications  
Launch Websites  
Access Data  
and Content



Manage

Customizable  
Helpdesk Tiles

System Status  
Notifications

View Details (optional)

Camera Control

Room Reset  
Securely End Meeting  
(Automated and/or By Button)

\* Requires 3rd Party Sharing Application  
\*\* Requires USB Capture Device





## Meet

One Click Join  
Or Adhoc

Exchange or  
Google Calendar



## Collaborate

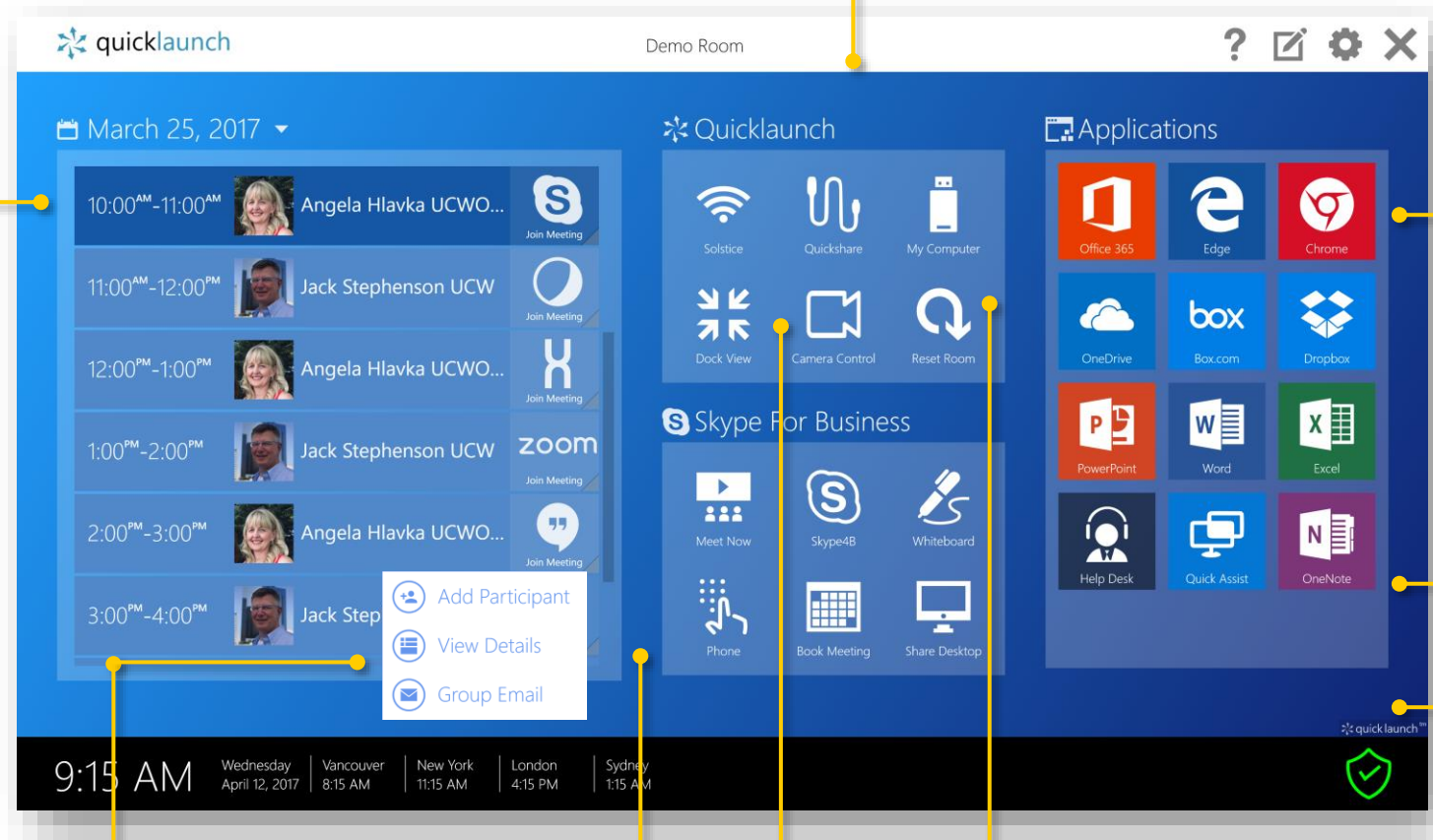
Whiteboard  
Start Applications  
Launch Websites  
Access Data  
and Content



## Manage

Customizable  
Helpdesk Tiles

System Status  
Notifications



The screenshot shows the quicklaunch interface with a blue header bar. On the left is a calendar for March 25, 2017, with meeting slots from 10:00 AM to 4:00 PM. Each slot has a profile picture and a 'Join Meeting' button. A context menu is open over the 3:00 PM slot, showing 'Add Participant', 'View Details', and 'Group Email'. In the center is a 'Quicklaunch' section with icons for Solstice, Quickshare, My Computer, Dock View, Camera Control, and Reset Room. Below this is a 'Skype For Business' section with icons for Meet Now, Skype4B, Whiteboard, Phone, Book Meeting, and Share Desktop. On the right is an 'Applications' section with a grid of tiles for Office 365, Edge, Chrome, OneDrive, Box.com, Dropbox, PowerPoint, Word, Excel, Help Desk, Quick Assist, and OneNote. The bottom status bar shows the time as 9:15 AM, the date as Wednesday April 12, 2017, and world clocks for Vancouver, New York, London, and Sydney. A green shield icon with a checkmark is in the bottom right corner.

Email Out to Participants, Add  
Participants, View Details (optional)

Skype For Business Integration  
Meet Now, Whiteboard,  
Dial, Book Meetings, ...

Camera Control

Securely End Meeting  
(Automated and/or By Button)



Wireless Device Sharing\*

Custom Room Name

HDMI Device Sharing\*\*

Easy File and USB Access

Start Applications

Designer Mode

Password Protected Settings

Toolbar Mode

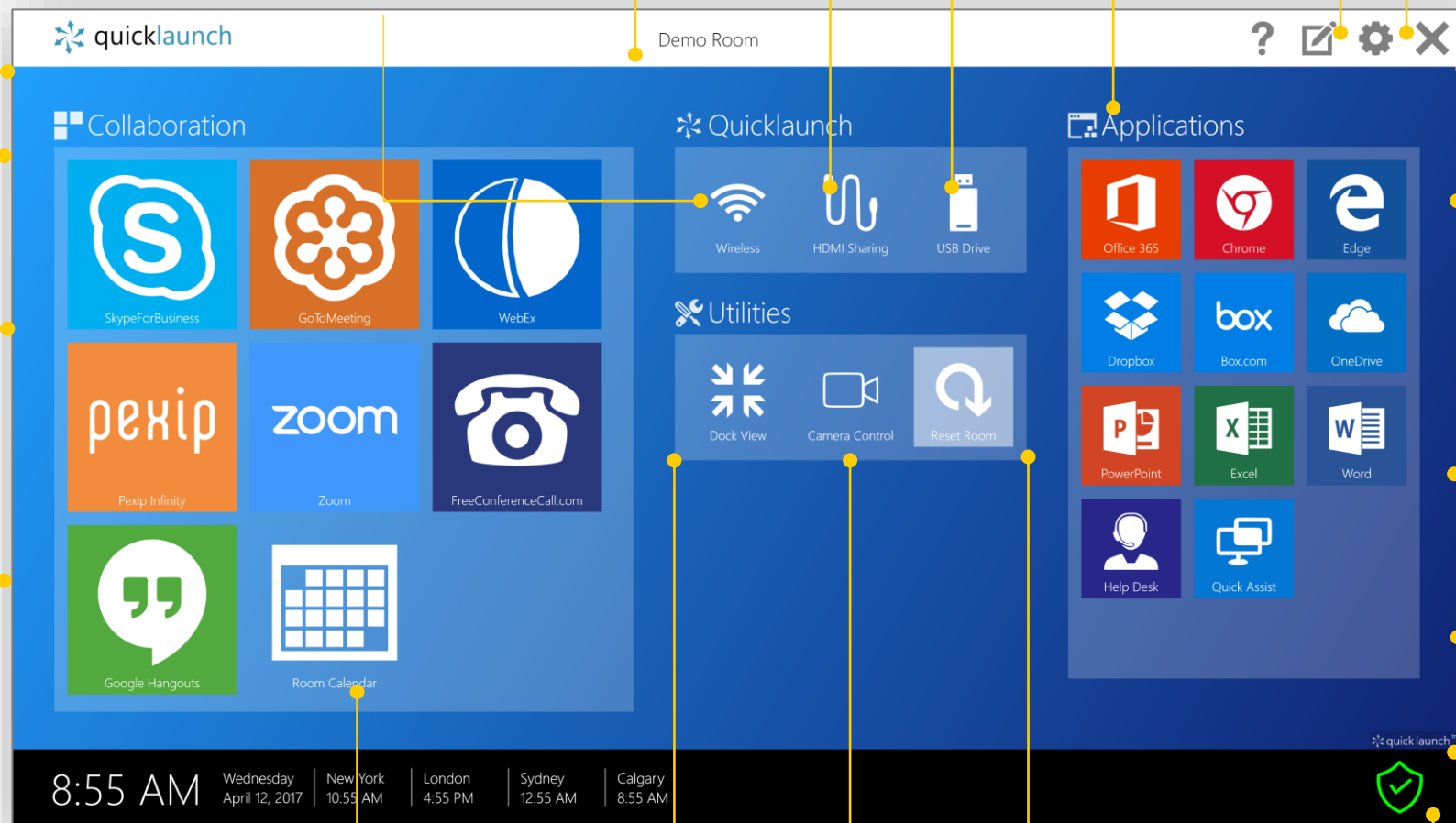
Multiple Themes with Customizable Logos and Colors

Customizable Group Labels

Start Collaboration Applications

Mouse, Touch, Pen Enabled

Multiple Time Zones



The main interface is divided into four primary sections:

- Collaboration:** Contains tiles for SkypeForBusiness, GoToMeeting, WebEx, Pexip Infinity, Zoom, and FreeConferenceCall.com.
- Quicklaunch:** Contains tiles for Wireless, HDMI Sharing, and USB Drive.
- Applications:** Contains tiles for Office 365, Chrome, Edge, Dropbox, Box.com, OneDrive, PowerPoint, Excel, Word, Help Desk, and Quick Assist.
- Utilities:** Contains tiles for Dock View, Camera Control, and Reset Room.

At the top, there is a header bar with the 'quicklaunch' logo, a 'Demo Room' label, and a toolbar with icons for help, settings, and exit. At the bottom, there is a status bar showing the time (8:55 AM), date (Wednesday April 12, 2017), and multiple time zones (New York 10:55 AM, London 4:55 PM, Sydney 12:55 AM, Calgary 8:55 AM).

Exit Quicklaunch™

Customizable Quicklaunch™ Action Tiles for Applications, Assets and Websites

Access Data

Multiple Languages

Optional Lockdown Mode

Pinnable/Dockable

Top-level Actions

Nested Action Groups

Quick Room Reset

Local Calendar  
Join or Book Meetings

Easily Switch  
Between Desktop  
and Toolbar View

Camera  
Control

Securely End  
Meeting and  
Reset Room

System Status  
Indicator

Optional Screen Saver

Fixed and Pinnable for Tabletop Touch Consoles

\* Requires 3rd Party Sharing Application

\*\* Requires USB Capture Device





Themes and Customizable Colors

Configurable Room Name

Wireless Device Sharing

HDMI Device Sharing\*\*

Easy File and USB Access

Configurable Group Labels And Actions

System Help

Designer Mode

Password Protected Settings

Toolbar Mode

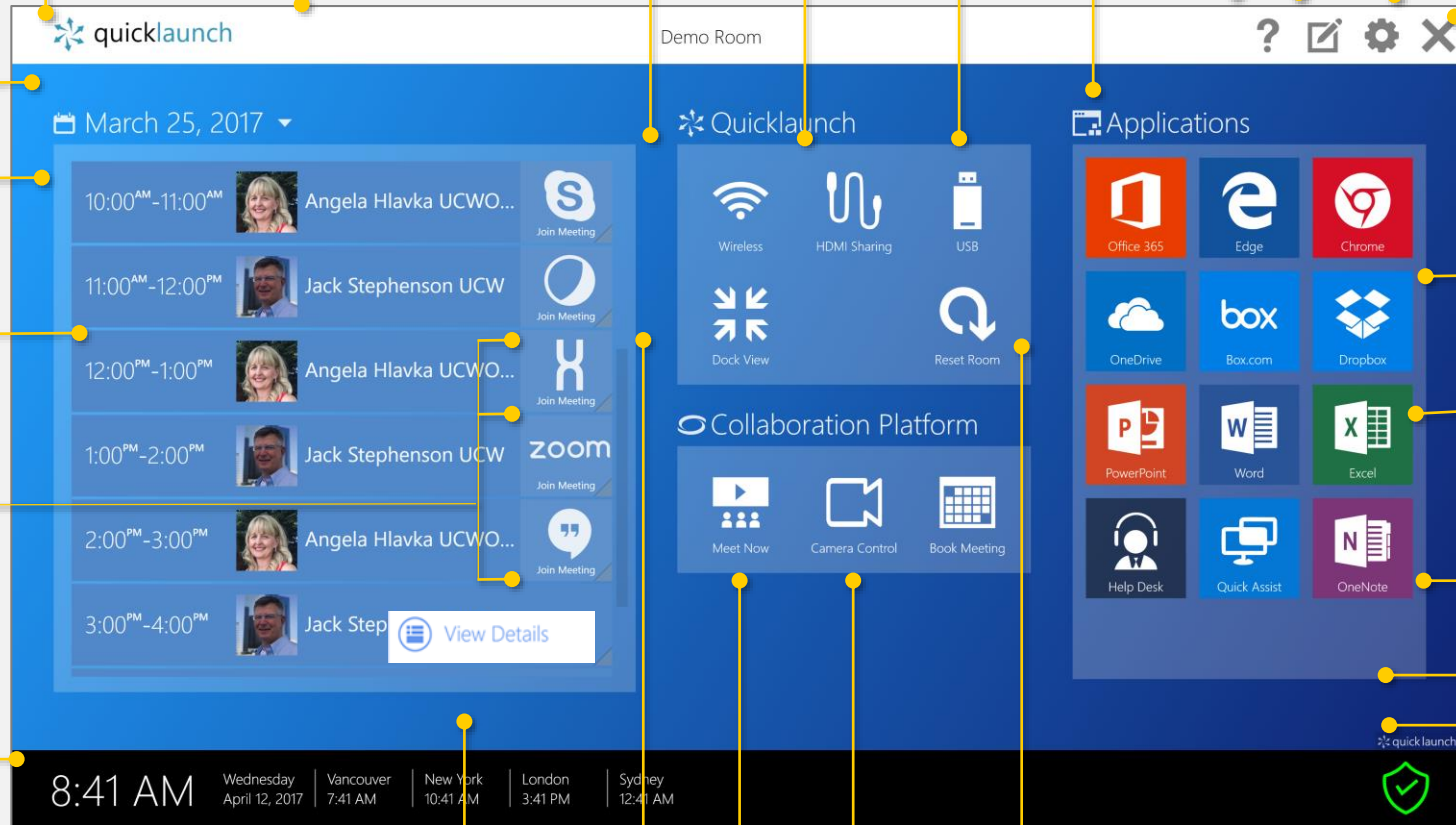
Configurable Logo / Branding

Microsoft Exchange & Gmail Calendar

Single Click To join Meetings

One Click Join Integration With over 8 Collaboration Vendors

Mouse, Touch, Pen Enabled



The main interface is divided into several sections:

- Header:** "quicklaunch" logo, "Demo Room", and navigation icons (help, edit, settings, close).
- Calendar:** "March 25, 2017" with a list of meetings:
  - 10:00 AM - 11:00 AM: Angela Hlavka UCWO... (Join Meeting)
  - 11:00 AM - 12:00 PM: Jack Stephenson UCW (Join Meeting)
  - 12:00 PM - 1:00 PM: Angela Hlavka UCWO... (Join Meeting)
  - 1:00 PM - 2:00 PM: Jack Stephenson UCW (Join Meeting)
  - 2:00 PM - 3:00 PM: Angela Hlavka UCWO... (Join Meeting)
  - 3:00 PM - 4:00 PM: Jack Step (View Details)
- Quicklaunch Panel:**
  - Wireless, HDMI Sharing, USB
  - Dock View, Reset Room
- Collaboration Platform:**
  - Meet Now, Camera Control, Book Meeting
- Applications:**
  - Office 365, Edge, Chrome
  - OneDrive, Box.com, Dropbox
  - PowerPoint, Word, Excel
  - Help Desk, Quick Assist, OneNote
- Footer:** "8:41 AM", "Wednesday April 12, 2017", and world clocks for Vancouver, New York, London, and Sydney.

Exit Quicklaunch™

Pinnable/ Dockable

Access Data

Customizable Quicklaunch™ Action Tiles for Applications, Assets and Websites

Customize Helpdesk Tile

Multiple Languages

Optional Lockdown Mode

Top-level Actions

Nested Action Groups

Quick Room Reset

\* Requires 3<sup>rd</sup> Party Sharing Application

\*\* Requires USB Capture Device

Current Time

Configurable World Clocks

Optional View Details

Easily Switch To Docked View

Meet Now

Camera Control

Securely End Meetings and Reset Room

System Resource Monitor

Optional Screen Saver

Fixed and Pinnable for Tabletop Touch Consoles



Themes and Customizable Colors

Configurable Room Name

Wireless Device Sharing

HDMI Device Sharing\*\*

Camera Control

Easy File and USB Access

Configurable Group Labels And Actions

Broadcast Message

System Help

Designer Mode

Password Protected Settings

Toolbar Mode

Configurable Logo / Branding

Microsoft Exchange Calendar

Single Click To join Meetings

One Click Join Integration With over 8 Collaboration Vendors

Mouse, Touch, Pen Enabled

Exit Quicklaunch™

Customizable Quicklaunch™ Action Tiles for Applications, Assets and Websites

Pinnable/ Dockable

Top-level Actions

Nested Action Groups

Quick Room Reset

Access Data

Multiple Languages

Optional Lockdown Mode

Current Time

Configurable World Clocks

Add Participant Optional View Details, Group Email

Easily Switch To Docked View

Skype4B Meet Now, Dial, Share Desktop Whiteboard Book Meeting

Securely End Meetings and Reset Room

Change User View your own Calendar

System Resource Monitor



Optional Screen Saver



Fixed and Pinnable for Tabletop Touch Consoles

\* Requires 3rd Party Sharing Application

\*\* Requires USB Capture Device



**PH: 09 414 0094**

**EMAIL: [sales@activevision.co.nz](mailto:sales@activevision.co.nz)**

**FREE PH: 0800 368 474**

**WEB: [activevision.co.nz](http://activevision.co.nz)**